

FORCELINE

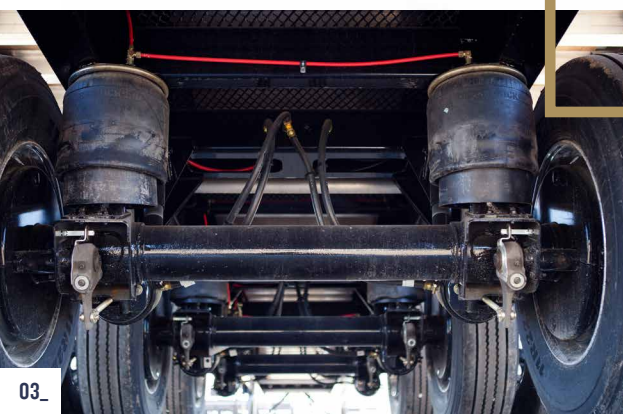


STEEL FLATBEDS

FLATBEDS | DROP DECKS | B-TRAINS



LODE KING



—
**WITH YOU FOR
THE LONG HAUL.**



FLATBEDS / STEEL FLATBEDS

01_ LOW PROFILE GOOSENECK

All Lode King deck trailers feature a standard low profile gooseneck web depth. (8 ½" for B-Trains, 9 ½" for flatbeds and drop decks)

02_ IN-LINE AIR FILTER

The in-line air filter protects the air system from road debris build-up. The filter is serviceable and replaceable. Extends the duration of the ABS warranty.

03_ SUSPENSION

The Hendrickson INTRAAX suspension combines the axle and suspension as a fully integrated unit.

04_ REAR IMPACT GUARD

The certified rear impact guard complies with under-ride protection requirements of both US DOT and Transport Canada.



FLAT DECK



Min. 34', Max. 52'6"

DIMENSIONS

LENGTH	Customer Spec. (Min. 34', Max. 52' 6")	COUPLER HEIGHT	Customer Spec. (Min. 46", Max. 52")
WIDTH	Standard 102" Overall	KING PIN	Customer Spec. (Min. 15", Max. 42")
GOOSENECK WEB DEPTH	Standard 9 ½"; 8 ½" Option Available		
SUSPENSIONS	Tandem Fixed, Tandem with Front or Rear Sliding Axle, Tandem Full Sliding, Tri-Axle Fixed, Tri-Axle Full Sliding, Quad Steerable Ontario SPIF, Western Quad		

STEP DECK



Min. 42', Max. 53'

DIMENSIONS

LENGTH	Customer Spec. (Min. 42', Max. 53')	COUPLER HEIGHT	Customer Spec. (Min. 45", Max. 54")
WIDTH	Standard 102" Overall	KING PIN	Standard 24"; Optional 18"
GOOSENECK WEB DEPTH	Standard 9 ½"	DECK HEIGHT	Standard 41" (35", 33½" Optional)
SUSPENSIONS	Tandem Fixed, Tandem with Front or Rear Sliding Axle, Tri-Axle Fixed, Quad-Axle		

B-TRAIN



32' / 28'

28' / 32'

DIMENSIONS

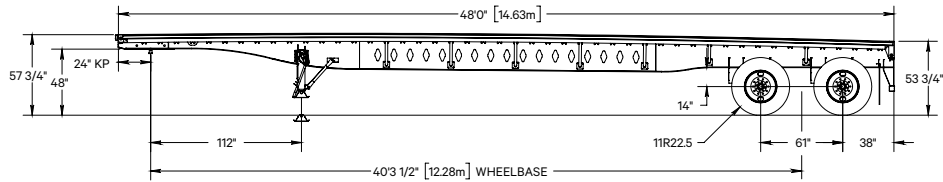
LENGTH	28' Lead & 32' Pull or 32' Lead & 28' Pull	COUPLER HEIGHT	Customer Spec. (Min. 46", Max. 52")
WIDTH	102" Overall	KING PIN	Customer Spec. (Typical 36" on Lead, 24" on Pull; Other options available)
GOOSENECK WEB DEPTH	Standard Low Profile 8 1/2"; Optional 7 1/2"		



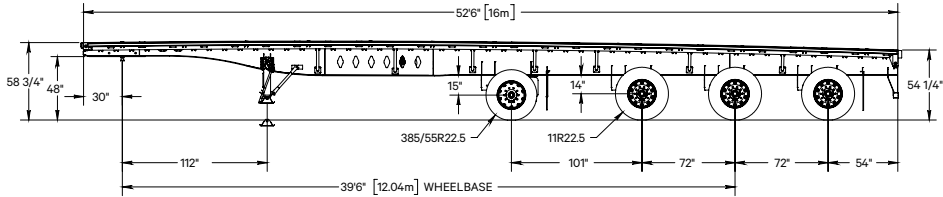
ENGINEERED
TOUGH.

FLATBEDS

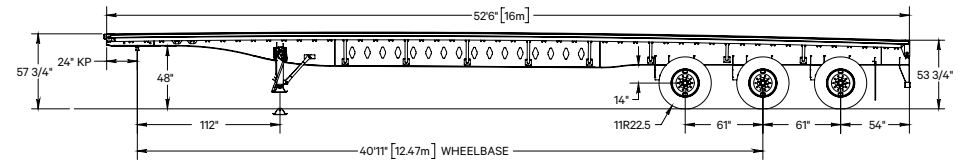
48' TANDEM



53' QUAD STEERABLE ONTARIO SPIF

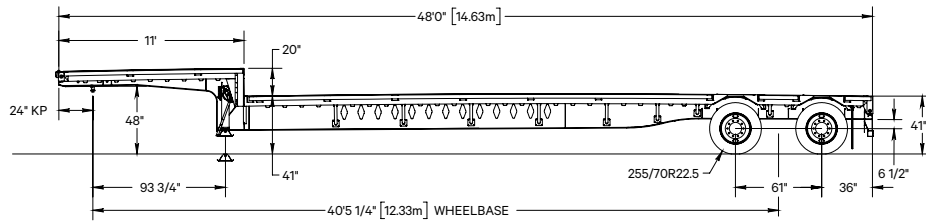


53' TRI-AXLE

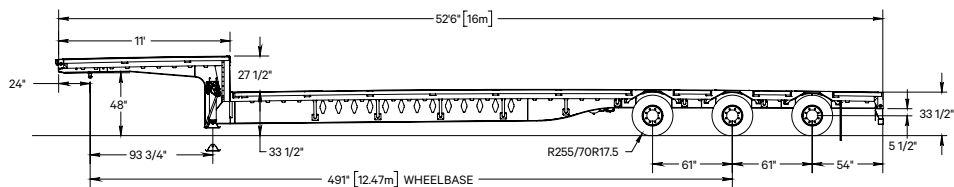


DROP DECKS

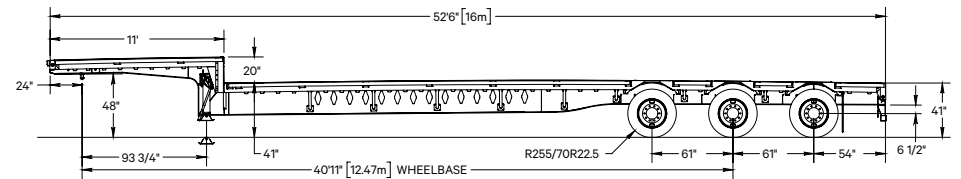
48' TANDEM



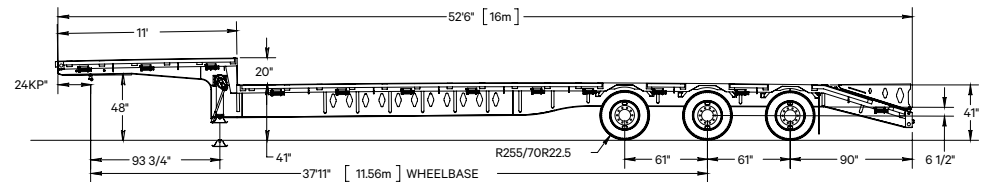
53' TRI-AXLE LOW DECK



53' TRI-AXLE

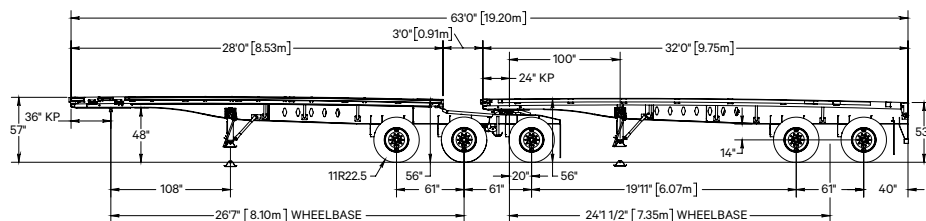


53' TRI-AXLE BEAVERTAIL

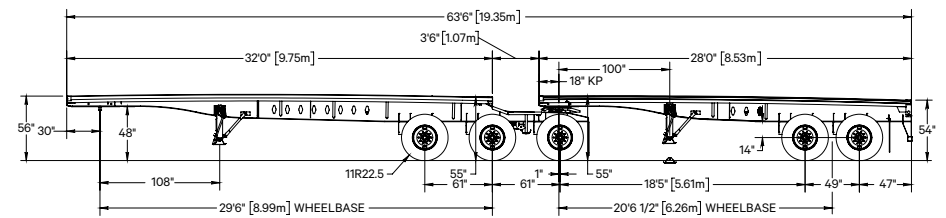


B-TRAINS

28' LEAD & 32' PULL



32' LEAD & 28' PULL



—
ALWAYS MOVING FORWARD.



 **FORCELINE**

STANDARD FEATURES



CAMBERED MAIN BEAM DESIGN

Camber is built into every beam to offset beam deflection under load.



CONTINUOUS RUBRAIL

The continuous rub rail has an outer surface recess to protect the conspicuity tape.



HIGH TENSILE STEEL FLANGES

5" wide, 130 KSI grade high-tensile steel is used for both top and bottom flanges.



CROSSMEMBER SPACING

Standard 12" OC spacing of crossmembers provides the support for uniformly distributed loads. Other options available for spacing.



KNEE BRACES

Steel tube knee braces set at 48" OC. Other Options Available for closer spacing.

OPTIONAL FEATURES



AXLE CHAIN SLINGS

Prevent air bags and shock absorbers becoming overextended.



BEAVERTAIL WITH FOLD DOWN RAMPS

The beavertail is equipped with traction cleats bolted through the floor. The rear bolster is designed to work with folding ramps. The fold down ramps are spring loaded for ease of use. Ramps are adjustable to accommodate various equipment widths.



BRAKE DRUMS

Lightweight options available.



COUPLER PLATE

Optional 5/16" or 3/8" plates available.



DISC BRAKES

Hendrickson MAXX22T air disc brakes.



MUD FLAPS

Heavy-duty black rubber, anti-spray, anti-sail.

UPPER COUPLER

The upper coupler design is one of the most robust in the industry.

PLUMBING & WIRING

Air and electrical lines from the front of the trailer are routed between the crossmembers and flanges to provide additional protection against damage.

STAKE POCKETS

Pipe spools are positioned between the 48" OC spaced stake pockets to help prevent damage from side-loading equipment. Each stake pocket and pipe spool is a tested and approved tie-down location, complying with Transport Canada requirements.

WINCHES

Three bar or barrel-style winches can be placed along each side of the trailer



FLOORING OPTIONS

Hardwood or aluminum flooring options available.

FORKLIFT RINGS

The flip-up fork lift rings make it possible for one trailer to be lifted onto the other.

SIDE RAIL – TUBULAR

A 3" x 4" tubular side rail allows the full width of the trailer to be a fully flat surface.

TARP ROPE HOOKS

Tarp rope hooks can be installed around the perimeter of each trailer, beneath the deck to secure load coverings.

TIRE INFLATION SYSTEM

Hendrickson TIREMAAX PRO

BODY STRUCTURE

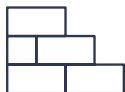
BOLSTER – FRONT	Formed Steel with Four External Mount Stake Pockets
BOLSTER – REAR	Formed Steel with Four Integral Stake Pockets
BUMPER	Certified Rear Impact Guard – Meets or Exceeds all Transport Canada and US DOT Regulatory Requirements; Other Options Available
COUPLER PLATE	Standard ¼"; Other Options Available
CROSSMEMBERS	4" Standard Steel @ 12" OC; Other Options Available
FLANGES	Grade 130 KSI High Tensile Steel, ¾" or 1½" × 5" Depending on Application
FLOOR	Standard 15/16" Fir; Other Options Available
KNEE BRACES	Steel Tubing @ 48" OC; Other Options Available
LIGHTING	Seven Wire Connector at Front; Truck-Lite LED Lighting Standard; Lifetime Warranty Lamps; Truck-Lite Wiring Harness; Other Options Available
LOAD SECUREMENT	Various Fixed or Sliding Winches, Barrel or Three-Bar Style, J-Hooks, and Others – All Tested to Meet Current Load Securement Regulations
MAIN BEAM PROFILE	Standard Cambered Design; Other Options Available
MUD FLAPS	Heavy Duty, Black Rubber, Anti-Spray, Anti-Sail
OTHER	Conspicuity Tape – Complies with All Regulatory Requirements
PAINT	Three-Stage Paint Process Consisting of a Coating of Zinc, Urethane Primer and Top Coat
RUB RAIL	Standard ¾" × 2 ½" Steel with Recess for Conspicuity Tape; Other Options Available
SIDE RAIL	Standard 6" Formed Steel Channel; Other Options Available
STAKE POCKETS	Steel – External Mount, 48" Spacing, Two Pipe Spools between Pockets; Other Options Available
WEB	Grade 80 KSI High Tensile Steel in High Stress Locations, Grade 50 in Less Critical Areas

RUNNING GEAR

ABS BRAKES	Meritor Wabco, Various Configurations Available, All Meet Transport Canada Regulations
BRAKE DRUMS	Standard Cast, Outboard Mount; Other Options Available
BRAKE LINING	HXS-H23 Extended Service
HUBS	Standard Cast, Hub-Piloted, 10-Stud Unimount, Oil Lubricated; Other Options Available
KING PIN	Holland
LANDING GEAR	Holland Mark V with 2-Speed Gear Drive; Other Options Available
SLACKS	Haldex S-ABA
SUSPENSION & AXLES	Hendrickson INTRAAX; Other Options Available
TIRES	Wide Range of Michelin, BF Goodrich and Bridgestone Products Available
WHEEL SEALS	National
WHEELS	Standard White Steel; Other Options Available

—
**WITH YOU
 FOR THE
 LONG HAUL.**

FOR MORE THAN 40 YEARS,
 LODE KING INDUSTRIES HAS
 BEEN MANUFACTURING THE
 FINEST TRAILERS ON THE ROAD.
 FROM GRAIN TRAILERS AND
 FLATBEDS TO SPECIALIZED-
 APPLICATION TRAILERS,
 LODE KING'S ATTENTION TO
 QUALITY AND CUSTOMER CARE
 SIMPLY CAN'T BE MATCHED.



SOLID FOUNDATION

We've been proud to call Winkler, Manitoba home since 1980. Lode King has grown from humble beginnings to become Western Canada's leading commercial trailer manufacturer. We're building on that foundation, continually growing and innovating as our products take on new challenges year after year. Commitment to these founding principles and our dedication to future growth underpin our company's culture and products.



MADE IN CANADA

Lode King understands our country's diverse and sometimes harsh landscape. From the majestic Rockies to the big-sky prairies, we're honoured to be Western Canada's largest commercial trailer manufacturer. Our trailers are built to withstand Canada's ever-changing, severe climates, while our dealer network conveniently spans coast to coast, serving our customers with a wide variety of product options.



CRAFTSMANSHIP

Built tough, our no-compromise quality standards are unmatched in the transport trailer industry. Manufacturing within ISO 9001 international standards, we source and use the best materials available, from initial production steps to final finishing. Our goal is always to build a trailer that's engineered to last, whatever our customers put it through. Every trailer is inspected and certified for quality assurance.



PROUD CUSTOMERS

Lode King trailers are built for drivers who demand more in terms of style, technology, durability and features. Our customers head out on the open road with a sense of pride and have become our ambassadors at large. We never forget that every trailer has our name on it, so we maintain and value the relationships we've formed with fleet operators over the past 40-plus years.



CUTTING EDGE TECHNOLOGY

The latest in automated laser cutting, bending and welding technologies provide the precision and consistency needed to produce top quality components. It's innovative tools like these that help push our products to new heights and make our vision to create the best trailer possible a reality. In our world-class paint facility we also push the boundaries of the transport industry's finishing standards.



LONG TERM RELIABILITY

Long term in our industry means more to Lode King than we can possibly convey. Our unwavering quest to produce the highest quality trailers has turned into decades of success for our customers. Knowing our durable trailers will withstand heavy use for years to come helps our customers purchase in total confidence. Our premium quality product means minimal downtime, which leads to more time out on the road, getting the job done.



PROUD, DEDICATED AND LOYAL TEAM

Pride, dedication and loyalty are just part of what drives the team at Lode King Industries. We are committed to maintaining one of the cleanest and safest workspaces around, and place a high level of importance on training and development. This means that our employees are able to develop their skills, which provides both security and opportunities for career development within our growing company.



CUSTOMER SERVICE: A LODE KING PRIORITY

We know exactly how important communication is when you're miles away from home. Technology and customer relations play a large role in how we provide solid service before, during, and after your purchase. As an integrated customer service team working together with our dealer network, we work hand-in-hand with our customers, pro-actively meeting their needs and maintaining the pride they feel in pulling a Lode King trailer.



LODE KING

BOX 1146, 135 CANADA ST
WINKLER, MB, CANADA, R6W 4B2

PHONE 204-325-4345

FAX 204-325-5369

LODEKING.COM

Lode King Industries is a division of Triple E Canada Ltd. Product improvement is an ongoing process at Lode King Industries. Thus we reserve the right to change any specifications or components on any specifications or components on any or all products without prior notice; errors or omissions excepted. Lode-King Industries is under no obligation to undertake modifications to units manufactured prior to changes in specifications. Printed in Canada. 09/21.

